



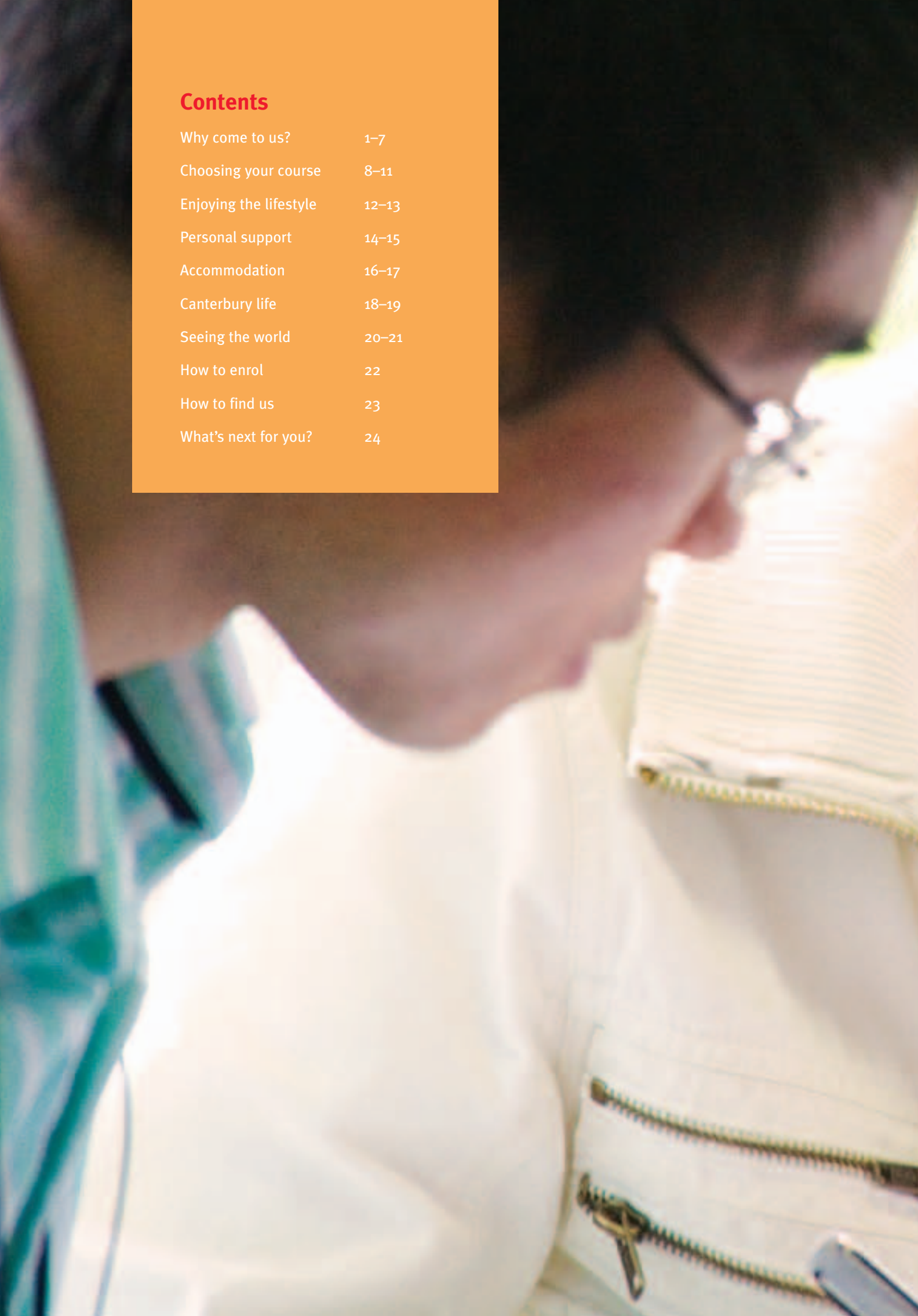
# Learn English Live English




**Stafford House School of English**  
Canterbury

## Contents

Why come to us?	1–7
Choosing your course	8–11
Enjoying the lifestyle	12–13
Personal support	14–15
Accommodation	16–17
Canterbury life	18–19
Seeing the world	20–21
How to enrol	22
How to find us	23
What's next for you?	24

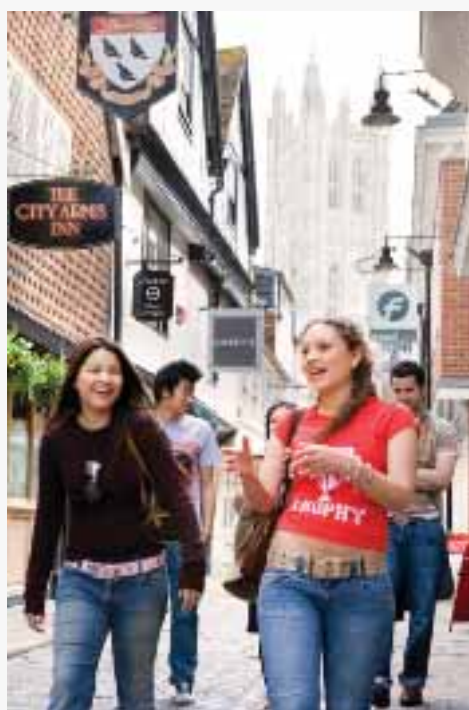




**Because  
you want  
to achieve  
success  
in English**

# Learn English Live English

**When you learn English you are achieving something that will be valuable to you all your life**



Knowing the English language will help you to make connections with new people and cultures. It will also help you to exchange thoughts and ideas effortlessly, to make new friendships, and to be more successful in your social life, in your studies or your career.

And being able to speak and write in English will make you feel at home anywhere in the world.

**So where is the best place for you to learn English and live English?**

This brochure will show you a school that has a total focus on you, on what you want and what you need to achieve. Somewhere that can offer you academic excellence and an exciting environment. Somewhere that will offer you an 'everything included' fees policy and give you the personal support that takes away all stress and hassle.

We really hope that you decide to study with us. If you do, we promise to give you a successful introduction to the world's number one language.

Then you will leave our School of English with a great sense of personal achievement and a whole new way of looking at the world.



A close-up, profile view of a woman with dark, curly hair, looking towards the right. She has a slight smile and is wearing a dark top. The background is bright and out of focus.

academic excellence



## Who can you trust to teach you in the best way?

You need to find a language school that is staffed by people who understand what you want and why, and can help you to choose the most appropriate personal learning strategy.

### Relevant courses

For instance, maybe you want to learn English so that you can enjoy travel and recreation even more. Maybe speaking and writing good English will help you with your studies or help you succeed in whatever career you may be choosing. Different needs demand different courses, and we have all the choices you could need.

Stafford House maintains a close working relationship with schools, educational consultants and agencies worldwide, and has been doing so since the school was founded in 1952. That way we make sure that our courses are relevant to what students like you may need.

# achievement

## Rigorous academic standards

The right school must have first-class teaching that will inspire you, and a real desire for you to succeed. At Stafford House we do. For us, nothing is too much trouble if it helps you to get the most from your time with us.

Stafford House School of English makes sure that all our teaching staff receive training in the latest methods, and that they are constantly evaluated for excellence by the Director of Studies and the Principal. Your progress, development and happiness are closely monitored throughout your time with

us, by regular tests, relevant course materials and homework. We also encourage you to study in our Individual Learning Centre.

Our classes are small, with a maximum of 14 students. That means you can be sure that there is always a good mixture of nationalities, and that English is spoken, rather than your own language.

We will encourage you to take internationally recognised examinations. You can also get expert advice on British university courses and applications from Stafford House College, which is on the same campus as the Language School.



## A learning environment that will inspire you to perform at your best

As you can see, Stafford House is big and spacious, so your classrooms are large, airy and elegant, with high ceilings and modern facilities.

There is space to breathe, space to work together, and plenty of your own personal space.

In a school like ours, you'll find you learn more effectively – because the environment and atmosphere makes it more fun to learn.

*“The teachers are professional and friendly at the same time – you can quickly improve without noticing it”*

*Giuseppina Schembri, Italy*



# 1 making progress

## Helping you to make the best decision

You want to make as much progress as possible. That means we need to make sure that you start learning at the appropriate level for your ability.

On your first day with us you will take a placement test. It assesses your knowledge of grammar and vocabulary, and how well you are able to understand and speak English. This all helps you and the Director of Studies to agree on the class where you will be most successful and happy.

This page describes the levels of skill that a student may already have and what opportunities each level provides. It shows each level of exam and some details of the most popular.

There is no obligation to take an exam at Stafford House if you do not want to, but there are plenty of opportunities to do so if you choose. Students enrolled on the Academic Year Programme can take one exam free of charge.

Over the page you will find clear details of all the courses that we offer. There is also information on how to combine study with work placements or internships, which could help you in your career.

## Your level

---

### Proficiency

You use a range of language close to that in your own language; you have no problems in understanding or communicating in any context. You are now concerned with extending your vocabulary and exploring the nuances of idiomatic English.

### Advanced

You express yourself clearly and effectively. You have a sound grasp of the major tenses and grammatical structures. Fluent and largely accurate, you are aware of the importance of using the appropriate style and register. You read widely and can follow the majority of what you hear on TV, radio and film.

### Upper intermediate

You can communicate effectively in most situations, discussing and expressing opinions on a wide range of topics and ideas. You are aware of different levels of formality and register. You will continue to broaden your vocabulary and develop into a more fluent and accurate user of English.

### Intermediate

You are a confident speaker and understand much of what you read and hear. You are familiar with most tenses and have a reasonable vocabulary. You can survive well in most situations. You now need to become more fluent and accurate, and to use more complex structures and sophisticated vocabulary.

### Pre-intermediate

You can communicate well in everyday social and travel situations and understand some of what is said to you. You are familiar with basic grammar structures and tenses but need to develop these further. You need to build up your vocabulary and listening skills.

### Elementary

You have a small, basic vocabulary and can communicate on a simple level. You know enough English to survive in everyday situations such as shopping, greeting and travelling. You make a lot of mistakes but can communicate and make other people understand you.

### Beginner

You know only a few words of English.





## Where it can take you

**IELTS** 7.5+  
**TOEFL** 250+ (CB)  
**TOEIC** 900+  
**CAMBRIDGE CPE**

Postgraduate university degree  
 Senior level work in an English-speaking environment

**IELTS** 6.5–7.5  
**TOEFL** 233–250 (CB)  
**TOEIC** 800–900  
**CAMBRIDGE CAE**

University degree/diploma courses  
 Entry into the English-speaking job market

**IELTS** 5.5–6.5  
**TOEFL** 193–233 (CB)  
**TOEIC** 650–800  
**CAMBRIDGE FCE**

Some university degree/diploma courses  
 Internship  
 Some English in the workplace

**IELTS** 4.5–5.5  
**TOEFL** 133–193 (CB)  
**TOEIC** 450–650  
**CAMBRIDGE PET**

University Foundation Programme at Stafford House College  
 Hotel placement

**IELTS** 3.5–4.5  
**TOEFL** 63–133 (CB)  
**TOEIC** 300–450

Social situations  
 Travel and tourism

**IELTS** 3.0  
**TOEIC** 150–300

Shopping  
 Simple travel and tourism

**IELTS** 1–2  
**TOEIC** 10–150

## IELTS

International English Language Testing System

**Exam dates:** every month

**Booking notes:** minimum 4 weeks in advance

**Levels:** all, but usually from Intermediate and above

**Exam:** Reading, Writing, Speaking, Listening

**Benefits:** no Pass/Fail. Every candidate receives a score. UK universities tell candidates what IELTS score is necessary for their chosen course. The most popular exam with students. We offer afternoon Option classes to prepare students for IELTS.

## CAE

Certificate in Advanced English

**Exam dates:** March, June and December

**Booking notes:** minimum 7 weeks in advance.

Students are advised to follow a specific course for one term

**Levels:** Advanced

**Exam:** Reading, Writing, Speaking, Listening, Grammar/Vocabulary

**Benefits:** recognised by universities and employers worldwide; understand and produce different types of texts; take part in meetings. *More advanced students can take CPE exam.*

## FCE

First Certificate in English

**Exam dates:** March, June and December

**Booking notes:** minimum 7 weeks in advance

Students are advised to follow a specific course for one term

**Levels:** Upper Intermediate

**Exam:** Reading, Writing, Speaking, Listening, Grammar/Vocabulary

**Benefits:** the most popular of the Cambridge exams. Widely recognised by universities and employers; routine clerical work possible. Helps develop study skills and gives students a motive to study hard.

## PET

Preliminary English Test

**Exam dates:** March, June and December

**Booking notes:** minimum 7 weeks in advance

**Levels:** Intermediate

**Exam:** Reading, Writing, Speaking, Listening, Grammar/Vocabulary

**Benefits:** recognised by employers and universities in some countries; evidence of practical skills. Students gain experience in taking exams in preparation for IELTS or FCE. *For Pre-Intermediate students, there is also the KET exam.*

*TOEIC, TOEFL and LCCIEB exams may also be taken. Please ask for details.*

# 2 choosing courses

## Intensive English

**5 levels:** Elementary–Advanced  
**Maximum class size:** 14  
**Minimum age:** 16

**22.5 hours a week**  
**Mornings:** 3 hours Monday–Friday  
**Afternoons:** 7.5 hours per week  
 (Wednesdays: activities)

**Start date:** any week  
**Number of weeks:** 2–36 (8–16 for English with work experience)

The morning programme is designed to develop the four skills of listening, speaking, reading and writing. At the same time, we aim to increase your awareness of English grammar and to extend your vocabulary.

In the afternoons, you can select different options according to your level and interests. We offer two sets of options each afternoon, which are changed every two or four weeks. Options are offered according to demand. Please inform us before you arrive if you have a particular requirement.

Typical afternoon options may include:

**Option 1 (60 minutes)**  
 Business, IELTS, Cambridge Exams (FCE, PET), Study skills, Grammar, Listening, Reading and Discussion.

**Option 2 (45–55 minutes)**  
 British Culture, Current Affairs, Art & Design, the Media, Music & Song, Literature.

## Standard English

**5 levels:** Elementary–Advanced  
**Maximum class size:** 14  
**Minimum age:** 18

**15 hours a week**  
**Mornings:** 3 hours Monday–Friday

**Start date:** any week  
**Number of weeks:** 2–36

This course is suitable if you want to combine part-time language learning with other commitments, such as work or looking after a family.

It is designed to develop the four skills of listening, speaking, reading and writing. At the same time, we aim to increase your awareness of English grammar and to extend your vocabulary.

## One-to-One Study

**10–30 lessons a week**

If you wish to have individual tuition instead of the afternoon options, this may also be arranged.

## Your week at Stafford House

	09.00–12.00	14.00–15.00	15.20–1
Monday	General English	LUNCH	Option 1    Option 2
Tuesday	General English		Option 1    Option 2
Wednesday	General English		Sport or local vis
Thursday	General English		Option 1    Option 2
Friday	General English		Option 1    Option 2





## Academic Term and Academic Year

**Start date:** there are three start dates each year. See *Courses, Dates and Fees* document at the back of the brochure for details.

### Number of weeks

**Academic Term:** 10 or 12

**Academic Year:** 24 or 36

Students on these programmes follow **Intensive** classes

These programmes are designed for students wishing to study on longer courses.

In the first month, there is a special Study Skills option for students on this programme. Students on the Academic Year Programme are encouraged to study for exams and can enter one exam free of charge. The fixed start dates are chosen to help students prepare for Cambridge exams.



Self Study/Internet Access	DINNER	
Self Study/Internet Access		Evening Activity
Self Study/Internet Access		
Self Study/Internet Access		Evening Activity
Self Study/Internet Access		

## Professional Development Placement (PDP)

**Minimum age:** 18

**Start date:** there are three start dates each year. See *Courses, Dates and Fees* document at the back of the brochure for details. For any change of dates, please contact the school. Placements can only be made at certain times of the year.

**Number of weeks:** 28 total

**Intensive course:** 8

**Work placement:** 18

**Intensive course + final exam:** 2

Students on these programmes follow **Intensive** classes

This programme leads to a recognised qualification and allows students to choose from two types of work experience.

### Internships

**Level of English:** Upper intermediate

If you wish to enhance your CV and employment opportunities, this programme offers practical work experience in an area of interest to you. We aim to match the placement with your career objectives and internships are available in sales, marketing, finance, administration, engineering, import/export, travel and tourism. Shorter placements on the Internship course are possible.

### Hotel work placements

**Level of English:** Intermediate

This is an ideal way to provide financial support while improving your English and offers paid work in hotels all over the UK. You may work as a general hotel assistant, bar or waiting staff, general or kitchen porter or room attendant, and will be paid at the current minimum wage, from which board and lodging is deducted.

### English for Business examination

After the placement, students return to school for a final period of two weeks on the Intensive course and take the London Chamber of Commerce and Industry English for Business exam.

### Visas and further information

For further details, contact us or download the PDP document from our website. Students requiring a visa to study in the UK must obtain a Student Visa for the PDP programme.

# lifestyle



*"The longer I stay at Stafford House, the more I love the place!"*

*Shiori Arai, Japan*



## At Stafford House you'll enjoy life as well as learning

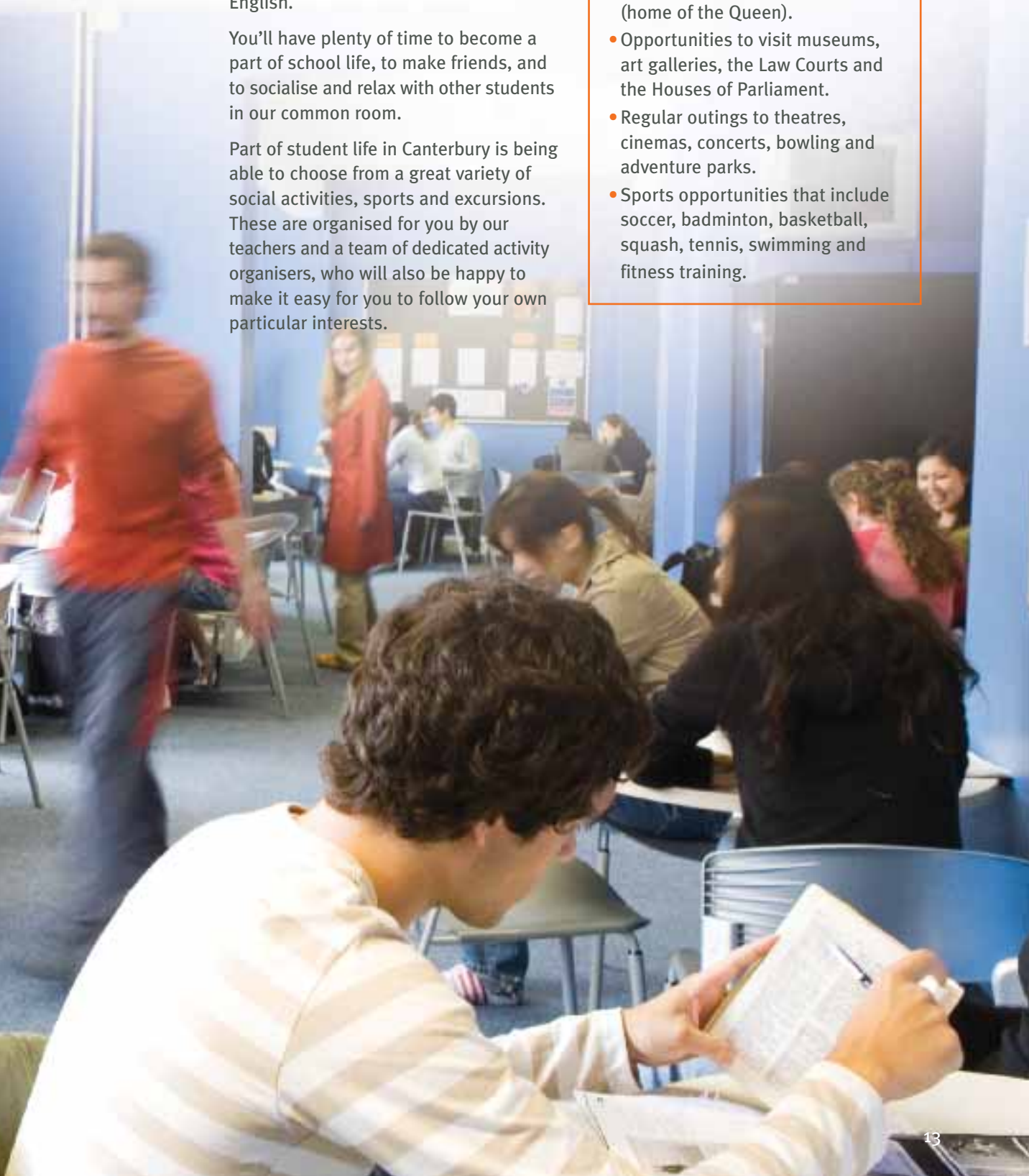
You'll be free to enjoy the lifestyle that is such an important part of experiencing England, and that lifestyle will help you to enjoy learning and using your skills in English.

You'll have plenty of time to become a part of school life, to make friends, and to socialise and relax with other students in our common room.

Part of student life in Canterbury is being able to choose from a great variety of social activities, sports and excursions. These are organised for you by our teachers and a team of dedicated activity organisers, who will also be happy to make it easy for you to follow your own particular interests.

### Student life

- Saturday excursions to London, Cambridge, Brighton and Windsor (home of the Queen).
- Opportunities to visit museums, art galleries, the Law Courts and the Houses of Parliament.
- Regular outings to theatres, cinemas, concerts, bowling and adventure parks.
- Sports opportunities that include soccer, badminton, basketball, squash, tennis, swimming and fitness training.





# costs

## Everything is included

Effective learning and lifestyle are important, but peace of mind is just as important! At Stafford House, we give you the peace of mind that comes from knowing two reassuring things:

Knowing that there will be no hidden or unexpected charges.

Being confident that we will be there to help you, no matter when or why you may need our support and understanding.

## Let's talk about value for money first

Our course fees include the cost of your chosen course, the materials, free internet access, and afternoon and evening activities.

The fees also include homestay accommodation in a shared room and a daily bus service between school and home. Your host family will do your laundry every week. We also include three meals a day which cater for international tastes and dietary requirements.

Any extra services or options you might ask for will usually be charged to you, but you will always be informed of the cost in advance.

### Student services

- Accommodation booking and administration
- Airport transfers
- Arrival briefing and tour
- Medical registration/appointments
- Police registration/visa renewal
- Bank account opening
- Advice on local religious and cultural groups
- Sickbay facilities and care in case of illness
- Confidential welfare counsellor
- Emergency assistance 24 hours every day

# care

## All the personal support you could ever need

### Health and well-being

Your health, security and happiness are of great importance to us, so we are always available to help you, from the moment you arrive.

Accommodation and welfare staff are available in the school from 8.30 to 5.30 every day, with 24-hour emergency assistance when the school is closed.

We are here to take care of you in every way – arranging accommodation, organising banks, police registration and dealing sensitively with any medical needs. In fact, we will help you with anything that may be affecting your study, or your personal happiness and well-being.



# feel at home

## That's important when you are far away from home

We understand that it's a long way to come and study in the UK. That's why we place most of our students in a real English family home where the English language is always spoken. In this home you will be welcomed like family and will feel like family, with everyday warmth, companionship and a sense of belonging.

You will usually share a room with a student from another country, to encourage you to practise your English language even more! This is the best – and the most fun – way to learn.

But if you would prefer it, and are happy to pay a supplement, we can provide a single room for you. Self-catering, hotel or guest house options are also available to you, at various prices.

All Homestay accommodation is expertly selected to give you high standards of accommodation, facilities and friendliness, and is constantly monitored to make sure that you are happy there.



### Accommodation options

- Homestay
  - Hotel or guest house\*
  - Self-catering option\*
- \*prices on application*

### Homestay accommodation

- Integration with family life
- Fully furnished shared study bedroom
- Single room (payment of supplement)
- Breakfast Monday to Friday and all meals at weekends with the family
- Hot lunch and dinner Monday to Friday in the school dining room
- Free bus service to and from school and Homestay locations – saving you the expense of public transport
- A weekly laundry service
- All carefully selected and monitored by our professional accommodation officers who place you in a family appropriate to your needs



*“The school takes responsibility for you and looks after you like a family. I am very happy here!”*

*Mohamed Sherif, Libya*

# city life



## Canterbury is a great place to live the English life

This is another reason why Stafford House would be such a good choice for you to make.

You'll find that Canterbury is the ideal place for you to sample the best of the UK. It is big enough to be stimulating, and small enough for you to find your way around easily.

Canterbury has a population of 50,000, and is a city that combines history with modernity and excitement with safety. This is where the Christian religion began in England, and Canterbury is in the part of our country where the English language was first spoken.

But today Canterbury combines its unique history and ancient buildings with an exciting and youthful student lifestyle that you will enjoy. It is the home of three universities and has lots of street life, with cafes, restaurants, traditional English pubs and fashionable and affordable shopping.

So there are plenty of ways and plenty of places to enjoy yourself in Canterbury.

*"You have a lot of fun in Canterbury, but you never feel lost"*

*Victor Duarte, Paraguay*

# The UK



**So much to see and do!**



Being in Canterbury is one of the big attractions we can offer you as a student. But where Canterbury is situated is an extra bonus, because it's convenient for so many other places.

From Canterbury you can easily get to the beautiful Kent coast, visit historic castles, or wander in the countryside of Kent, known as 'the garden of England'.

You will be able to see fashionable Brighton, Windsor, favourite home of the Queen of England, and visit the great university town of Cambridge. You can play golf at Sandwich, one of the world's most famous courses, or be in London, one of the world's greatest cities, in less than an hour and a half.

And all this is just the beginning. It is easy to explore a lot more of the world while you are with us.

One of the world's biggest world attractions, Paris, is only two hours away from you by Eurostar train. And there are many other places throughout continental Europe that are also thrilling and unique, like Venice and Barcelona. Most of the places and prices can be accessed from the websites shown on the opposite page.

You'll find that if you come to Stafford House the whole of Europe will be accessible to you, quickly and cheaply, safely and conveniently.

# Europe



Look how close you are to some of the most glamorous places in Europe.

If you visit these travel websites, you will see how many destinations are available to you – and at such low prices!

- [easyjet.com](http://easyjet.com)
- [ryanair.com](http://ryanair.com)
- [lastminute.com](http://lastminute.com)
- [eurostar.com](http://eurostar.com)
- [thetrainline.com](http://thetrainline.com)

# how to enrol



## Here's how we make things simple

### Everything you need to register

Our *Courses, Dates and Fees* document contains detailed information about dates and fees. There is also a registration form. It should be at the back of this brochure, or you can download it from our website.

### Choose your course

**Apply** by completing the registration form in black ink.

**Pay** by credit card or bank transfer.

**Send the registration form** by fax or post.

### We will contact you

**Enrolment** details will be sent to you. If you need an original copy to be sent to you to help you obtain a Visa from the British Embassy, please let us know.

**Accommodation** details will be sent to you a few weeks before the start of your course.

### You can contact us

Please phone, fax or e-mail at any stage, if you need more information. Remember to let us know what time you will arrive.

### Arrive in Canterbury

You may prefer to arrive by yourself, or you can request an airport taxi transfer.

Accredited by the



ENGLISHUK   
member

# how to get to us

## Welcome to Stafford House School of English

### From Central London

There are trains every hour from London Victoria station to Canterbury East station, which is just a few minutes by taxi from the school.

### From France

Travel by ferry or Eurostar. There are direct trains to Canterbury from Dover and Ashford International rail station.

### From Gatwick airport

There is a direct train service from Gatwick to London Victoria station. At Victoria take another train to Canterbury East station (see *From Central London*).

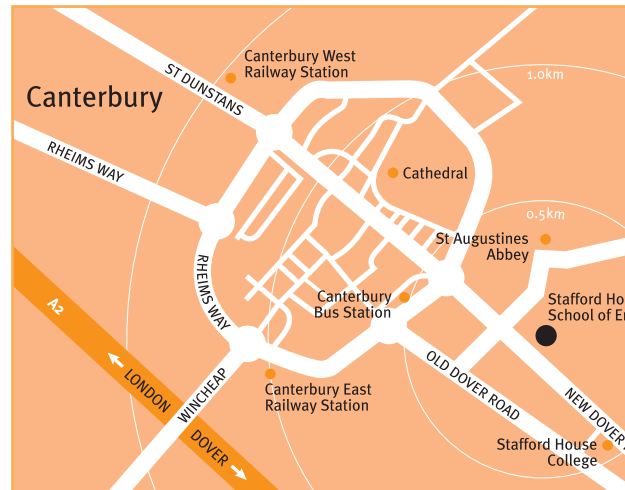
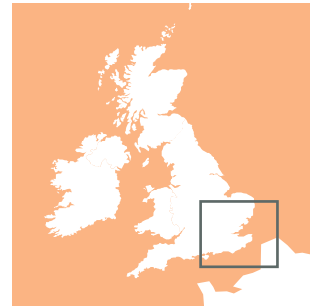
### From Heathrow airport

Take the Underground (metro) from Heathrow to Hammersmith. At Hammersmith, change platform for the District line to Victoria; at Victoria go to the main railway station and take the train to Canterbury East station (see *From Central London*).

### From Stansted airport

Take the Skytrain direct rail link from Stansted airport to London Liverpool Street station. From Liverpool Street station, take the Circle line underground (metro) to Victoria; at Victoria go to the main railway station and take the train to Canterbury East station (see *From Central London*).

Stafford House School of English  
19 New Dover Road  
Canterbury, Kent CT1 3AH, UK  
Telephone: +44 (0) 1227 452250  
Fax: +44 (0) 1227 453579  
Email: [soe@staffordhouse.com](mailto:soe@staffordhouse.com)  
[www.staffordhouseelt.com](http://www.staffordhouseelt.com)



# Success

## Life after Stafford House will never be the same

It's a great moment when you are presented with your certificate at the end of your course. And it's a moment that can often lead to quite unexpected and exciting futures.

Some of our students go on from the School of English to Stafford House Sixth Form College. Some gain admission to a good British university, thanks to their new language skills. And others find that their improved ability to speak and write in English helps them to get a better job.

We hope to be able to help you achieve your ambitions soon!



*"I feel very pleased and satisfied with my progress – the staff and students here made my stay unforgettable!"*

*Andrea Melgar, Mexico*



[www.staffordhouseelt.com](http://www.staffordhouseelt.com)

Stafford House School of English, 19 New Dover Road, Canterbury, Kent CT1 3AH, England  
Telephone: +44 (0) 1227 452250 Fax: +44 (0) 1227 453579 Email: [soe@staffordhouse.com](mailto:soe@staffordhouse.com)